

ASSOCIATION OF FAMILY



AND CONCILIATION COURTS

There's No Place
Like Two Homes

The Complexities of Separation,
Divorce and Co-parenting



**AFCC REGIONAL
TRAINING
CONFERENCE**

**Westin Kansas City
at Crown Center**
November 7-9, 2013
\$145 single or double

Kansas City, Missouri

Regional Training Conference

There's No Place Like Two Homes: The Complexities of Separation, Divorce and Co-parenting

Westin Kansas City at Crown Center • Kansas City, Missouri • November 7-9, 2013

***Sharpen your practice skills with
intensive three-hour training workshops!***

Featuring:

Two Homes: A Time to Ask the Tough Questions

Keynote Address with Isolina Ricci, PhD

Intimate Partner Violence and Child Custody Evaluation: The Integrated Framework

Drugs, Denial and Danger: Parental Addiction to Prescription Drugs

Teaching Parents How to Raise the Kids They Love with the Ex They Hate

Hearing Children's Voices in Disputed Custody Cases

Twenty-First Century Parenting Plans: An Exploration of Virtual Contact Methods

"Everyone I Know Hits Their Kids": Cultural Competence in Custody and Visitation Matters

Digging Deeper: How to Unearth Important Facts from Your Child Client

"My favorite parts of the AFCC conference were the learning, camaraderie, practical skills, willingness of presenters to continue the conversation after their session is over, lack of pretentiousness, and commitment of all to helping children. Afterwards I felt like I had just come back from summer camp with brainiacs who share my interests and values. I learned so much, some of which I was able to put to use in court the very next day. I met new people and solidified relationships with others I've met at earlier conferences. I LOVE the opportunity for multidisciplinary thinking and getting "outside the box" of thinking like a lawyer. The level of professionalism and knowledge in those halls was amazing!"

—Carol Gorenberg, JD, MBA, Santa Rosa, California

Earn up to 18 hours of continuing education for psychologists, mental health professionals, lawyers, mediators and others (details on page 8).

Join AFCC Today for Extra Savings!

AFCC is the Association of Family and Conciliation Courts—an interdisciplinary and international association of professionals dedicated to improving the lives of children and families through the resolution of family conflict. AFCC brings together members of multiple disciplines in the private, public and nonprofit sectors from all over the world. AFCC is unique in that members do not share a common profession. Instead, AFCC members share a strong commitment to education, innovation and collaboration in order to benefit communities, empower families and promote a healthy future for children.

Join AFCC when you register for the conference and save \$10 on your first year's membership. Select the "New Member Special" when completing the registration form and register at the AFCC member rate.

AFCC Member Benefits Include:

- **Family Court Review**, the quarterly academic and research journal of AFCC in print and electronic format with full access to the online archives dating back to 1963.
- **Online Membership Directory** of over 4,800 colleagues worldwide in a searchable format.
- **AFCC eNEWS**, the monthly electronic newsletter from AFCC delivers the latest developments in the field straight to your inbox.
- **Parenting Coordination Network** listserv of AFCC members to share tips, advice, referrals, and network with others who serve as PCs or are interested in the role.
- **Member discounts** on AFCC conferences, training programs and publications, Wiley-Blackwell publications, and professional liability insurance from Complete Equity Markets, Inc.

www.afccnet.org

Conference at a Glance

WEDNESDAY, NOVEMBER 6, 2013

6:00pm–8:00pm Conference Registration

THURSDAY, NOVEMBER 7, 2013

8:00am–5:00pm Conference Registration

8:30am–9:00am Coffee and Rolls

9:00am–4:30pm Pre-conference Institutes

9:00am–4:30pm AFCC Board of Directors Meeting

12:00pm–1:00pm Lunch (on your own)

5:00pm–6:00pm Welcome Reception

9:00pm–12:00am AFCC Hospitality Suite

FRIDAY, NOVEMBER 8, 2013

7:30am–5:00pm Conference Registration

7:45am–8:15am Coffee and Rolls

8:15am–9:15am Opening Session

9:30am–12:30pm Workshops 1-5

12:30pm–1:45pm Lunch (on your own)

2:00pm–5:00pm Workshops 6-10

Evening Taste of Kansas City

9:00pm–12:00am AFCC Hospitality Suite

SATURDAY, NOVEMBER 9, 2013

7:45am–8:45am Committee Meetings

8:00am–4:45pm Conference Registration

8:30am–9:00am Coffee and Rolls

9:00am–12:00pm Workshops 11-15

12:00pm–1:30pm Luncheon (included)

1:45pm–4:45pm Workshops 16-20

AFCC Board of Directors

Nancy Ver Steegh, JD, MSW *President*
St. Paul, MN

Richard L. Altman, JD *President Elect*
Napoleon, OH

Hon. Peter Boshier *Vice President*
Wellington, New Zealand

Marsha Kline Pruett, PhD, MSL *Secretary*
Northampton, MA

Annette T. Burns, JD *Treasurer*
Phoenix, AZ

Arnold T. Shienvold, PhD *Past President*
Harrisburg, PA

Hon. Diana Bryant Melbourne, VIC, Australia

Andrea Clark, MSW St. Louis, MO

patti cross, JD Toronto, ON, Canada

Linda B. Fieldstone, MEd Miami, FL

Larry Fong, PhD Calgary, AB, Canada

Lesley Goldsmith, JD Canton, MA

Jacqueline Hagerott, JD, LLM Columbus, OH

Hon. R. John Harper Toronto, ON, Canada

Grace M. Hawkins, MSW Tucson, AZ

Mindy F. Mitnick, EdM, MA Edina, MN

Robert A. Simon, PhD Del Mar, CA

Matthew J. Sullivan, PhD Palo Alto, CA

Larry V. Swall, JD Liberty, MO

AFCC Staff

Peter Salem, MA *Executive Director*

Leslye Hunter, MA, LMFT *Associate Director*

Candace Walker, CMP, CMM *Program Director*

Chris Shanahan, BA, CPA *Business and
Administrative Director*

Dawn Holmes *Operations Administrator*

Erin Sommerfeld, MLIS *Program Manager*

Carly Wieman, BA *Program Coordinator*

Shawn Werner, BA *Administrative Assistant*

AFCC

6525 Grand Teton Plaza

Madison, WI 53719

Phone: (608) 664-3750

Fax: (608) 664-3751

Email: afcc@afccnet.org

Web: www.afccnet.org

Pre-conference institutes

(Separate registration fee required.)

THURSDAY, NOVEMBER 7, 2013

9:00am–4:30pm

1. Upgrading the Two-Home Tool Kit: It's More than Just Nuts and Bolts

Helping parents develop and maintain a reasonable parenting arrangement and two healthy homes requires effective, easy-to-use upgrades of strategies, structures and frameworks along with fresh perspectives and expectations. This institute will examine: (1) the new list of fundamentals coordinated with three new co-parenting guidelines based on conflict, commitment, trust and cooperation levels; (2) a paradigm for healthy parallel parenting and shared decision making, strategies for reducing conflict, disrespect, distrust and the “miserable middle,” management of electronic communications; and (3) strategies for promoting individual and co-parenting strengths. The primary content will be illustrated through case examples, discussions, presentations and small and full group interaction. Tools will include enhanced guidelines, checklists, quizzes for parents, effective skills and strategies, in addition to a discussion on subtle adjustments in professional demeanor and expectations.

Isolina Ricci, PhD, Founder and Director, Custody & CoParenting Solutions, San Ramon, CA

2. Parenting in the Context of Coercive Controlling Abuse: “Toto, I’ve a Feeling We’re Not in Kansas Anymore!”

This interactive institute, designed for family court professionals across disciplines, will explore parenting in the context of coercive controlling abuse. Faculty will propose a working definition of coercive controlling abuse and what it can mean for children, parents and parenting. Participants will be better able to make recommendations, advocate, manage dispute resolution processes, and structure parenting arrangements that account for coercive controlling abuse so that children and adult victims are protected and abusive parents have appropriate access to their children.

Loretta M. Frederick, JD, Battered Women’s Justice Project, Minneapolis, MN

Gabrielle Davis, JD, Battered Women’s Justice Project, Minneapolis, MN

Juan Carlos Areán, MM, National Latin@ Network for Healthy Families and Communities, Leverett, MA

3. Engaging People in Conversation: Getting Out of the Fight and into Meaningful Dialogue

Framing mediation as a conversation sets the tone for dialogue instead of debate. How does a mediator signal to the participants that the mediation room is a safe place to talk about what is most important? What does it mean for the mediator to be fully present with the participants? How does the mediator focus on assisting participants in making decisions based on their own criteria, instead of what the mediator thinks is best? Join two experienced mediators for a lively and interactive dialogue, and leave with new skills as the presenters demonstrate what it means to be in conversation with participants in mediation.

Rebecca T. Magruder, MSW, JD, St. Charles, MO

Sue Bronson, LCSW, Milwaukee, WI

4. Gatekeeping, Alienation, and Protective Parenting: Relating Co-parenting Practices to Best Interests of the Child

Gatekeeping, in which parents facilitate or hinder each other’s relationship with a child, is now a key concept in child custody disputes. It’s a concept that helps explain different ways in which parents co-parent. Parents can be facilitative, restrictive, protective, adaptive, maladaptive, justified or unjustified. It’s also an umbrella under which alienation and protective parenting may fall. By understanding gatekeeping, professionals can provide practical ways to intervene to improve co-parenting. This concept allows the focus to shift from the myopic “he said, she said” dynamic to nuanced and useful child-focused outcomes.

Leslie M. Drozd, PhD, Co-author, Parenting Plan & Child Custody Evaluations: Using Decision Trees to Increase Evaluator Competence & Avoid Preventable Errors, Newport Beach, CA

William G. Austin, PhD, Evergreen, CO

Milfred “Bud” Dale, PhD, JD, Topeka, KS

Michael A. Saini, PhD, Co-author, Parenting Plan & Child Custody Evaluations: Using Decision Trees to Increase Evaluator Competence & Avoid Preventable Errors, Toronto, ON, Canada

“The conference was outstanding not only in terms of the quality of the programs, but in providing a welcoming atmosphere that encouraged professional dialogue and connections. That combination made the conference invaluable!”

—Kate McNamara, PhD, Fort Collins, CO

Regional Training Conference

There's No Place Like Two Homes: The Complexities of Separation, Divorce and Co-parenting

FRIDAY, NOVEMBER 8, 2013

7:30am–5:00pm Conference Registration

7:45am–8:15am Coffee and Rolls

8:15am–9:15am Opening Session

Welcome: Nancy Ver Steegh, JD, MSW, AFCC President, St. Paul, MN

Keynote Address

Two Homes: A Time to Ask the Tough Questions

The two-home concept has evolved and expanded over the past four decades as parents, lawmakers and professionals have shaped and reshaped the reality of shared parenting after separation within the context of an accelerating pace of change in the economy, culture, customs, shifting norms and information technology. Isolina Ricci, author of the *Mom's House, Dad's House* books, will share her perspective based on 40+ years as a clinician, mediator and statewide coordinator of court services. Dr. Ricci will discuss the core challenges professionals, parents and children face today and offer a forecast for the future.

Isolina Ricci, PhD, Founder and Director, Custody & CoParenting Solutions, San Ramon, CA

9:30am–12:30pm Workshops 1-5

1. Intimate Partner Violence and Child Custody Evaluation: The Integrated Framework

The Integrated Framework and Forensic Model for the assessment of intimate partner violence (IPV) in child custody evaluation is a research-based guide for a comprehensive evaluation when IPV allegations are a salient issue. A behavioral dimension approach allows for more detailed descriptions and accurate predictions of violence risk and future co-parenting issues. The pattern of past coercive control without violence will be emphasized and considered for predicting future coercive co-parenting. Protective gatekeeping in the aftermath of IPV will be discussed.

William G. Austin, PhD, Lakewood, CO

Leslie M. Drozd, PhD, Co-editor, Parenting Plan Evaluations: Applied Research for the Family Court, Newport Beach, CA

2. Impasse: What Causes It, How to Avoid It, and How to Work Through It

What's a mediator to do when clients get stuck and insist that it's "my way or the highway"? While mediators may be tempted to use drastic interventions, there are better ways to help clients through impasse. This workshop promises a lively discussion of why and how clients get stuck in impasse, how mediators contribute to the problem and the types of interventions that can be effective in helping clients and mediators see a different perspective.

Rebecca T. Magruder, MSW, JD, St. Charles, MO

3. Considerations in Family Court for Children with High-Functioning Autism

This presentation provides an explanation of high-functioning autism (HFA) and Asperger's Disorder (AD) and how the DSM-5 has redefined these disorders. Techniques will be discussed for how professionals can tailor interviews to children and adolescents with these disorders. Attorneys, judges and mental health professionals will learn about special considerations needed to address these children's needs in family court, including specific knowledge that professionals need when making recommendations regarding parenting time.

Sol R. Rappaport, PhD, ABPP, Counseling Connections, Libertyville, IL

Cecily Kanter, PsyD, New Connections Academy, Palatine, IL

4. Drugs, Denial and Danger: Parental Addiction to Prescription Drugs

This workshop provides an opportunity for practitioners in all disciplines to discuss the serious crisis of parental prescription drug abuse and its impact on children and families. The session will include discussion of the most widely abused prescription drugs, the pharmaceutical and street names for these drugs, and the body's reactions/responses to prescription drug use, abuse and addiction. Participants will learn how to read drug screening results and identify which tests are most appropriate for various prescription drugs.

Barbara Stalder, JD, University of Houston Law Center, Houston, TX

Janet Heppard, JD, University of Houston Law Center, Houston, TX

5. Teaching Parents How to Raise the Kids They Love with the Ex They Hate

Co-parenting is the normative post-divorce living arrangement, but contentious parents often lack the tools to implement an effective decision-making process that protects their children from conflict and poor parenting. Fundamental principles of co-parenting will be reviewed and a solution oriented process will be presented that allows parents who hate each other to make co-parenting decisions on schools, religion, the soccer field, significant others and finances. This is a practical workshop for the clinician and attorney who face these difficult clients in their offices.

Edward D. Farber, PhD, Reston Psychological Center, Reston, VA

12:30pm–1:45pm Lunch (on your own)

2:00pm–5:00pm Workshops 6-10

6. Hearing Children’s Voices in Disputed Custody Cases

The child’s preferences or wishes are a factor in best interests determinations, but the weight given this factor is often qualified or eliminated because of age or “immaturity.” Children want to be heard on matters affecting them. Children are “rights holders” entitled to have their wishes presented and considered. This workshop will (1) review different models for presenting the child’s voice; (2) outline how to legally represent children in domestic cases; and (3) provide guidance on how to interview and listen to children.

Linda D. Elrod, JD, Washburn University School of Law, Topeka, KS

Milfred “Bud” Dale, PhD, JD, Topeka, KS

Bethany Roberts, JD, Topeka, KS

7. Do Divorced and Separated Parents Have More Rights than Their Children?

Parents who cannot agree on decisions involving their children can continue to return to court or have an appointed third party make these decisions for them. This workshop will examine the costs and benefits to children from this expansion of court involvement in family disputes. Alternatives to this expanded role will be proposed to return decision making back to families and relieve children of caregivers who are perpetually litigation-ready.

Nancy B. Schneider, JD, PhD, Nancy Schneider Law, Inc., Wyncote, PA

Carol A. Gantman, PhD, Bala Child & Family Associates, LLC, Bala Cynwyd, PA

Lise A. Fisher, JD, Law Offices of Michael E. Fingerma, Philadelphia, PA

8. High-Conflict Custody Litigants: MMPI-2 Research and Implications for Practice

High-conflict litigants present unique challenges to the family law practitioner. This workshop will discuss recent MMPI-2 based research on these litigants and will present strategies for case management and risk management in cases involving high conflict litigants.

Jeffrey C. Siegel, PhD, ABPP, Dallas, TX

9. Twenty-First Century Parenting Plans: An Exploration of Virtual Contact Methods

Discussion will illustrate the benefits and challenges of virtual contact methods, explore specific hardware and software needs and identify various online tools for parents. Sample orders will be presented, demonstrating language for both cooperative and high-conflict parenting arrangements implementing virtual contact methods. State-specific virtual visitation statutes and case law will be explored, including efforts in Missouri to establish virtual visitation standards. Case examples will also be presented where parenting time is supervised via virtual methods.

Dawn Kuhlman, MA, Kuhlman Conflict Solutions, LLC, Liberty, MO

Sherrill P. Roberts, JD, Commissioner, Clay County Court, Liberty, MO

Larry V. Swall, JD, Director, MARCH Mediation, Liberty, MO

Ronnie Beach, MS, EdS, Independence, MO

10. Anguish, Anxiety and Aggression: In the Moment with Our Divorcing Clients

This workshop will examine some of the many important moments—subtle or obvious—when we are faced with anguish, anxiety and/or aggression in our clients, our colleagues or ourselves. What to do? Push? Comfort? Hold back? Confront? This session will explore the process of making these tough choices by introducing a nuanced tool kit of techniques, including enhanced self-awareness.

Lisa Herrick, PhD, The Collaborative Practice Center of Greater Washington, Washington, DC

Barbara Burr, JD, Burr Law Firm, Washington, DC

Kate Scharff, LCSW, The Collaborative Practice Center of Greater Washington, Washington, DC

Evening Taste of Kansas City

9:00pm–12:00am AFCC Hospitality Suite

SATURDAY, NOVEMBER 9, 2013

- 7:45am–8:45am **Committee Meetings**
- 8:00am–4:45pm **Conference Registration**
- 8:30am–9:00am **Coffee and Rolls**
- 9:00am–12:00pm **Workshops 11-15**

11. Multidisciplinary Teamwork

This workshop presents two distinct programs on multidisciplinary collaboration in family law matters. The first will demonstrate, through presentation and role play, how mental health “conflict specialists” and legal professionals “settlement specialists” can work together for a more effective and satisfying divorce resolution. The second will address how to develop a multidisciplinary team, determine the roles of the members and function within these roles during times of crisis.

Alan Freed, JD, Paule, Camazine & Blumenthal, PC, St. Louis, MO

Nancy Williger, MSW, PhD, St. Louis, MO

Ruth O. Moore, PhD, LPC, Walden University, Savannah, GA

Ann S. Ordway, JD, MA, EdS, Fairleigh Dickinson University, Madison, NJ

**12. “Everyone I Know Hits Their Kids”:
Cultural Competence in Custody and Visitation Matters**

A parent’s cultural background may permeate all aspects of parenting, including views on privacy, sleeping arrangements, medical care, education, stepchildren and corporal punishment. Given the increasing diversity in many countries, family law professionals must be mindful of the importance of cultural competence. This workshop aims to provide practice tips about what to do when confronted with cases that involve cultures with which the participants have limited familiarity.

BB Liu, JD, The Children’s Law Center New York, Brooklyn, NY

Dawn J. Post, JD, The Children’s Law Center New York, Brooklyn, NY

Lauren McSwain, JD, The Children’s Law Center New York, Brooklyn, NY

Michelle Grasso, LMSW, The Children’s Law Center New York, Brooklyn, NY

“AFCC’s focus on improving the lives of the children of divorce and separation is exemplary. I couldn’t do my job as a parenting evaluator or coordinator without AFCC.”

—Chris Hahn, PhD, Bozeman, MT

13. When is Enough, Enough? Realistic Bases for Custody Report Critiques

The review and critique of child custody evaluations is a growing field that, as it matures, must continue to have a dialogue about what kind of expectations or consensual practices make sense. This workshop will present a framework for the review of child custody evaluations to further discussion of best practices.

Robert A. Simon, PhD, Co-author, Forensic Psychology Consultation in Child Custody Litigation, Del Mar, CA

Philip M. Stahl, PhD, Co-author, Forensic Psychology Consultation in Child Custody Litigation, Queen Creek, AZ

14. Approaches to Hearing from Adolescents

Family law disputes involving adolescents raise unique issues that center on their developmental capacities, when and how to hear from them and how to help parents address their adolescents’ needs through dispute resolution processes. This workshop will update participants’ knowledge and skills in interviewing adolescents, hearing their voice in child inclusive mediation, and assisting parents in moving beyond conflict to integrate what they “hear” into what they implement for their adolescent children.

Mindy Mitnick, EdM, MA, Uptown Mental Health Center, Edina, MN

Kirsten Lysne, PhD, Moxie, Inc., Minneapolis, MN

Kevin McGrath, JD, McGrath Dispute Resolution, Minneapolis, MN

15. Research-Based Specialized ADR for Custody Disputes with Domestic Abuse

This workshop will describe the successes, challenges and continuing implementation in Nebraska of the research-based mediative approach for contested custody cases involving domestic intimate partner abuse and unresolved parental conflict set forth in the 2007 Parenting Act: specialized ADR facilitation. Since 2008, hundreds of specialized ADR cases have been facilitated. A description of how the research was integrated into the creation and implementation of the specialized ADR training and programmatic approaches in Nebraska will be provided.

Casey Karges, MDD, Executive Director, The Mediation Center, Lincoln, NE

Lorin Galvin, JD, Douglas County District Court Conciliation/Mediation Office, Omaha, NE

Robert Sanford, JD, Legal Director, Nebraska Domestic Violence Sexual Assault Coalition, Lincoln, NE

12:00pm–1:30pm Luncheon (included)

SATURDAY, NOVEMBER 9, 2013

1:45pm–4:45pm Workshops 16-20

16. Managing the Role of the Significant Other as a Family Restructures

The role of the significant other raises multiple issues in restructuring families. When is it permissible to introduce children to new significant others? What is the boundary between assistance and interference in parenting by the new significant other? What is the child's perception? It is almost always difficult to establish communication patterns, expectations and boundaries in these matters, and then there are the really difficult cases. This workshop will help professionals address these challenging questions.

Sue Bronson, LCSW, New Prospects, Milwaukee, WI

Sarah Whiting, JD, Hansen & Hildebrand, SC, Milwaukee, WI

17. The Path to the Wizard: Engaging Parents in Parenting Coordination When You Are Not in Oz

What convinces litigants to agree to parenting coordination when the court cannot enter an order without agreement? When the court is not authorized to appoint a parent coordinator, what educational and procedural features should be considered? Should there be more careful selection of cases? This workshop will attempt to answer these questions and more using the experience and a study of the St. Louis County Family Court Parenting Coordination program.

Hon. Douglas R. Beach, St. Louis County Circuit Court, St. Louis, MO

Ann Bauer, JD, MEd, Bauer Soule Garnholz Albin, Clayton, MO

Arthur Nissenbaum, MA, JD, St. Louis, MO

Simone Haberstock McCartney, JD, The McCartney Law Firm, LLC, St. Louis, MO

18. Digging Deeper: How to Unearth Important Facts from Your Child Client

When interviewing a child client, have you ever felt that you weren't getting the full story? Or have you understood what the child wanted, but not understood their rationale? Details matter, including where you meet with clients, your reactions, tone, the kinds of questions you ask and how they are phrased. This workshop will examine techniques for getting beyond a basic understanding of your client's wishes and helping children open up about personal topics.

Jenny Schulz, JD, Executive Director, Kids First Law Center, Cedar Rapids, IA

Marsha Kline Pruett, PhD, MSL, Northampton, MA

19. The Colorado Courts: Reforming the Role of Court Appointed Professionals

The stakes are high for the court appointed professionals serving in family court. Surveys show that many Americans do not view courts in the United States as "fair" and "impartial." This session will discuss the reform efforts that are being implemented in Colorado Courts to meet the four basic expectations of procedural fairness: Voice, Neutrality, Respectful Treatment, Trust.

William DeLisio, MSLA, Family Law Program Manager, Colorado State Court Administrator's Office, Denver, CO

Holly Panetta, JD, Director of the Office of Dispute Resolution, Colorado State Court Administrator's Office, Denver, CO

20. Undeclared Dads, Unmarried Partners, Guardians without Orders—Serving the Other Two-Parent Households

Children living in two homes as the result of the divorce of their biological parents are only one slice of the multiple-home family in the United States. Increasingly, a child's "other home" is the household of a separated but never-married parent (dads who don't have paternity orders; former same-sex partners) or the household of a grandparent or other relative. This presentation will explore these diverse multi-home families, review the limited legal rights of these "other co-parents," and make recommendations as to how family law professionals can better serve these families.

Barbara Glesner Fines, JD, LLM, Associate Dean & Rubey M. Hulen Professor of Law, UMKC School of Law, Kansas City, MO

Mary Kay O'Malley, MA, JD, Clinical Professor of Law & Director, Child & Family Services Clinic, UMKC School of Law, Kansas City, MO

Save the Dates

AFCC 51st Annual Conference

May 28-31, 2014

The Westin Harbour Castle
Toronto, Ontario, Canada

AFCC 11th Symposium on Child Custody Evaluations

November 6-8, 2014

Westin La Cantera Hill Country
San Antonio, Texas

AFCC 52nd Annual Conference

May 27-30, 2015

Hilton New Orleans Riverside
New Orleans, Louisiana

Travel and Lodging Information

Hotel Information

The Westin Kansas City at Crown Center
One East Pershing Road
Kansas City, Missouri 64108
(816) 474-4400

The Westin Kansas City at Crown Center is located within the Hallmark Crown Center, which features more than 85 acres of shops, restaurants and theaters. The hotel's fitness center includes free weights, weight machines, a cardio theater, sauna and steam rooms, running track, an outdoor heated pool and much more. The Westin is 10 blocks from the downtown KC Power and Light Entertainment District—with unique shops, restaurants and entertainment venues—and minutes from the renowned Country Club Plaza. Next to the hotel is Liberty Memorial, the country's only WWI Museum. The Link, a climate-controlled glass sky bridge, leads directly to Union Station with prominent traveling art exhibits and the popular family-friendly interactive Science City. Hotel information can be found at www.westincrowncenterkansascity.com. Kansas City information is available at www.visitkc.com.

Conference attendees are responsible for making their own hotel reservations at the special rate of \$145.00 per night for single or double occupancy. Rooms are subject to availability and a limited number of rooms have been reserved at the special rate; therefore, early registrations are encouraged. Make your reservations online at <https://www.starwoodmeeting.com/Book/AFCC> or call the toll-free reservation number at (800) 937-8461. It is imperative that you identify yourself with the Association of Family and Conciliation Courts or the AFCC Regional Training Conference when you make your reservation by phone in order to receive the special rate. On Monday, October 14, 2013, any non-reserved rooms remaining in the block will be released to the public for general sale and the special rate may not be available after that date.

Airline Travel

The Kansas City International Airport (MCI) is located approximately 25 minutes from the Westin Kansas City at Crown Center. Major airlines include Air Canada, Air Tran, American, Delta, Frontier, Seaport, Southwest, United and US Airways. Airport information can be found at www.flykci.com.

Amtrak

For those wishing to take the scenic route, the Amtrak train to Kansas City stops at Union Station—connected by The Link (a climate-controlled sky bridge) to the Westin Kansas City at Crown Center. More information can be found at www.amtrak.com.

Ground Transportation

Courtesy phones for taxi service are located both inside and outside the terminal at each bag claim area and outside many of the terminal exits. The approximate fare is \$55 to the Crown Center area; consult your driver for rates. SuperShuttle provides shared-ride transportation for \$18 per person each way. You may call (800) 258-3826 to make a reservation, go to one of nine SuperShuttle counters in the baggage claim area, or approach any of the distinctive SuperShuttle blue vans located on the outer island.

Rental Car Information

Rental car options include Alamo, Avis, Budget, Dollar, Enterprise, Hertz, National, Payless and Thrifty. All rental car companies share a Gray Rental Car Shuttle that stops at marked shelters at terminal medians.



Parking

Valet parking at the Westin Kansas City at Crown Center is \$21 per day. Self-parking overnight is \$16 with in/out privileges.

Climate

Missouri has four distinct seasons. In late October to early November, temperatures in Kansas City range from a high of 68°F to a low of 38°F, with an average daytime temperature of 50°F. Be sure to take a light jacket or sweater for indoors, as meeting rooms and restaurants may be slightly cool.

Call for Proposals AFCC 51st Annual Conference

.....
 **Navigating the Waters
of Shared Parenting:** 
Guidance from the Harbour
.....

TORONTO

Westin Harbour Castle

May 28-31, 2014

- Accepting workshop proposals through October 3, 2013.
- Conference program brochure available January 2014.

Visit www.afccnet.org for details.

Of Special Note

Continuing Education Credits

AFCC will provide a certificate of conference attendance for a processing fee of \$15 for members and \$20 for nonmembers. *The certificate will verify attendance at conference sessions and may be used to apply for continuing education credits with the registrant's accrediting institution.* A complete list of conference sessions eligible for continuing education credits will be available at the AFCC registration desk.

Psychologists: AFCC is approved by the American Psychological Association to sponsor continuing education for psychologists. AFCC maintains responsibility for the program and its content. The program offers up to 18 continuing education credit hours for psychologists.

Mediators: All mediation sessions are eligible for continuing education units through the Association for Conflict Resolution.

Mental Health Professionals: An application for continuing education approval from the National Association of Social Workers (NASW) will be submitted for up to 18 CE hours; however, individuals will need to verify approval with their credentialing or licensing boards.

AFCC is approved by the California Board of Behavioral Sciences to offer continuing education for MFT and LCSW professionals in California, PCE#4630. The pre-conference institutes provide 6 hours and the conference program provides up to 12 hours toward continuing education required by BBS.

AFCC is an NBCC-Approved Continuing Education Provider (ACEP™) and may offer NBCC-approved clock hours for events that meet the National Board of Certified Counselor requirements. The ACEP is solely responsible for all aspects of the program. Up to 18 hours may be earned.

Missouri Professional Counselors and Marriage and Family Therapists: The respective licensing boards, Missouri Committee for Professional Counselors and State Committee of Marital & Family Therapists, will count continuing education credits received from this program toward renewal requirements if verified with a certificate of attendance because AFCC is an NBCC-approved continuing education sponsor.

Lawyers: An application for MCLE approval will be submitted to The Missouri Bar and an application for approval of CLE activity will be submitted to the Kansas CLE Commission.

Audio Recordings:

Conference sessions and pre-conference institutes will be recorded and MP3 downloads of the sessions will be available at the conference; they may also be ordered online at www.dcpvidersonline.com/afcc/ after the conference concludes. No personal audio-recording of sessions is permitted.

Conference Scholarships

Thanks to the outstanding support of AFCC members who contributed to the AFCC Scholarship Fund, scholarships will be awarded for the AFCC Regional Training Conference. Scholarships include registration fees for the conference, one full-day pre-conference institute, Saturday's lunch, AFCC hospitality suite and a certificate of attendance. Recipients are responsible for funding any additional expenses including travel, lodging, meals and

related expenses. The scholarship application is available on the AFCC website at www.afccnet.org. **The application deadline is September 5, 2013.** Recipients will be notified mid-September.

Hospitality Suite

The Hospitality Suite will be open for informal networking on Thursday and Friday, 9:00pm-12:00midnight. Please wear your name badge. The Hospitality Suite location will be posted at the conference registration desk.

Taste of Kansas City

Sign up onsite to join friends and colleagues on Friday evening at a local restaurant. Restaurant descriptions and menus will be available with sign-up sheets in the conference registration area. Participants are responsible for food, beverage and any transportation costs.

Special Needs

If you have special meal requests or other special needs, please note this on the registration form. The Westin Kansas City at Crown Center has accommodations for the physically challenged; please notify them of your needs when making your reservations.

Registration Information

New Member Special: Join AFCC when you register for the conference and receive a twelve-month membership for \$150—a \$10 discount—and save even more by registering at the member rate! To join, simply select the New Member Special rate on the conference registration form. *The New Member Special is available only to first-time AFCC members.*

Pre-conference Institute: Includes attendance at one Pre-conference Institute, refreshment breaks and institute materials. *Pre-conference Institute registration is separate from registration for the full conference.*

Conference Registration: Includes all conference sessions and materials, conference proceedings on a USB flash drive, refreshment breaks, reception, luncheon and Hospitality Suite. *Pre-conference Institute registration is separate from registration for the full conference.*

Conference Presenter Registration: Available only to conference presenters. Includes all conference sessions and materials, conference proceedings on a USB flash drive, reception, luncheon and Hospitality Suite. *A separate registration fee is required for conference presenters who wish to attend Pre-conference Institutes.*

Full-time Student Registration: Includes admission to conference plenary and workshop sessions only and electronic conference proceedings. Meal functions are not included; however, luncheon tickets may be purchased at the conference. Registration must include proof of full-time student status. The full-time student non-member rate includes one year of AFCC student membership with benefits in an electronic format only. *Separate registration is required for Pre-conference Institutes.*

Certificate of Attendance: AFCC will provide a certificate of total hours attended at the conference opening session, workshops and institutes for a minimal processing fee of \$15 for members and \$20 for non-members. To sign up, simply select Certificate of Attendance on the conference registration form. Please complete a verification of attendance form at the conference.

Registration Form

AFCC Regional Training Conference • November 7-9, 2013 Westin Kansas City at Crown Center • Kansas City, Missouri

Register online at www.afccnet.org

Please register by October 11, 2013 to ensure that your name appears on the list of conference attendees in the conference materials.

Please type or print clearly. This form may be duplicated.

First Name, (Dr./Mr./Ms./Judge) _____ M.I. _____ Last Name _____ Degree _____

Badge Information: First name or Nickname (As you would like it to appear on your name badge) _____

Title/Profession _____ Organization _____

Street Address _____

City _____ State/Province _____ Country _____ Postal Code _____

Phone _____ Fax _____ Email _____

Is this your first AFCC Conference? Yes No Do you have any special needs? Meals (vegetarian, food allergies) Access Other

Please provide details: _____

Please select appropriate amount(s) below, indicate choices, and total at the bottom	Paid by Oct. 7	Paid After Oct. 7
New Member Special (<i>First-time members only</i>)		
<i>Join AFCC for one year and register at the AFCC member rates below!</i>	<input type="checkbox"/> \$150	<input type="checkbox"/> \$150
Pre-conference Institutes (<i>separate registration required</i>)		
Pre-conference Institute, AFCC Member	<input type="checkbox"/> \$140	<input type="checkbox"/> \$160
Pre-conference Institute, Non-Member	<input type="checkbox"/> \$170	<input type="checkbox"/> \$190
Conference Registration Rates		
Conference, AFCC Member	<input type="checkbox"/> \$290	<input type="checkbox"/> \$320
Conference, Non-Member	<input type="checkbox"/> \$350	<input type="checkbox"/> \$380
Conference Presenter, AFCC Member	<input type="checkbox"/> \$200	<input type="checkbox"/> \$210
Conference Presenter, Non-Member	<input type="checkbox"/> \$220	<input type="checkbox"/> \$230
Full-time Student, AFCC Member (<i>ID required. No meals included</i>)	<input type="checkbox"/> \$125	<input type="checkbox"/> \$150
Full-time Student, AFCC Non-Member (<i>ID required. No meals included</i>)	<input type="checkbox"/> \$150	<input type="checkbox"/> \$175
Certificate of Attendance, AFCC Member	<input type="checkbox"/> \$15	<input type="checkbox"/> \$15
Certificate of Attendance, Non-Member	<input type="checkbox"/> \$20	<input type="checkbox"/> \$20
TOTAL:	\$ _____	\$ _____

Pre-Conference Institute Selections (*separate registration required*)
Thursday, November 7, 2013, 9:00am-4:30pm

If you have registered for a Pre-conference Institute, please check only one of the following:

1. Upgrading the Two-Home Tool Kit: It's More than Just Nuts and Bolts

2. Parenting in the Context of Coercive Controlling Abuse:
"Toto, I've a Feeling We're Not in Kansas Anymore!"

3. Engaging People in Conversation: Getting Out of the Fight and into Meaningful Dialogue

4. Gatekeeping, Alienation, and Protective Parenting: Relating Co-parenting Practices to Best Interests of the Child

Conference Workshop Selections
(Please write in one workshop number per time slot)

Friday, November 8 9:30am-12:30pm Workshop 1-5 _____

Friday, November 8 2:00pm-5:00pm Workshop 6-10 _____

Saturday, November 9 9:00am-12:00pm Workshop 11-15 _____

Saturday, November 9 1:45pm-4:45pm Workshop 16-20 _____

Method of Payment
Registrations must be paid in full prior to attendance.

Payment of \$ _____ is enclosed (U.S. currency only please)

Please charge \$ _____ to my Visa MasterCard
 American Express Discover

Credit card transactions will be processed in US dollars; exchange rate on day of transaction will apply.

Card Number _____

Exp. Date ____ / ____ Security Code _____

Card Holder's Signature _____

Purchase Order # (if applicable) _____

You may register online at www.afccnet.org or return completed form and payment to:

AFCC
6525 Grand Teton Plaza
Madison, WI 53719
Phone: (608) 664-3750
Fax: (608) 664-3751
Email: afcc@afccnet.org

Cancellation Policy: Transfer of registration to another person may be done at any time without a fee. All requests for refunds must be made in writing. Written notice of cancellation received by fax or postmarked by October 21, 2013 will be issued a full refund minus a \$60 service fee. Written notice received by fax or post-marked by October 28, 2013 will have the \$60 service fee deducted with the balance issued as a credit for future AFCC conferences, publications or membership dues. No refunds or credits will be issued for cancellations received after October 28, 2013.



6525 Grand Teton Plaza
Madison, WI 53719

Association of Family and Conciliation Courts
Regional Training Conference

Kansas City

There's No Place Like Two Homes: The Complexities of Separation, Divorce and Co-parenting

Westin Kansas City at Crown Center
November 7-9, 2013

**Sharpen your practice skills with
intensive three-hour training workshops!**

Featuring:

Two Homes: A Time to Ask the Tough Questions
Keynote Address with Isolina Ricci, PhD

**Intimate Partner Violence and Child Custody
Evaluation: The Integrated Framework**

**Drugs, Denial and Danger:
Parental Addiction to Prescription Drugs**

**Teaching Parents How to Raise the Kids
They Love with the Ex They Hate**

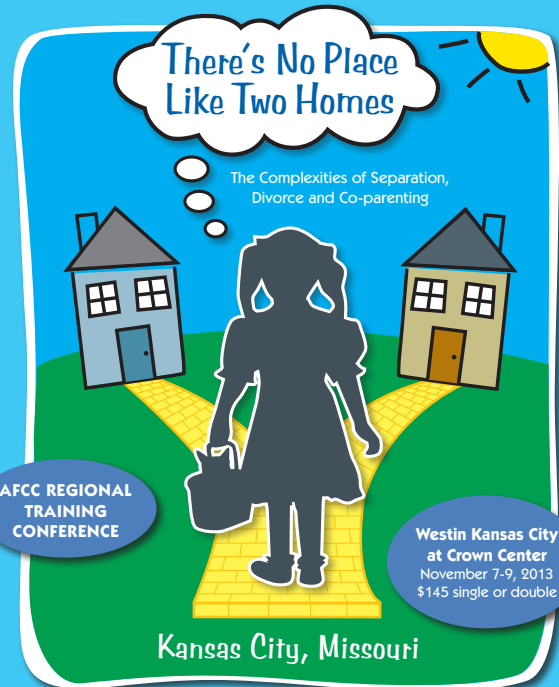
**Hearing Children's Voices in
Disputed Custody Cases**

**Twenty-First Century Parenting Plans:
An Exploration of Virtual Contact Methods**

**"Everyone I Know Hits Their Kids":
Cultural Competence in Custody
and Visitation Matters**

**Digging Deeper: How to Unearth
Important Facts from Your Child Client**

ASSOCIATION OF FAMILY AND CONCILIATION COURTS
AFCC



AFCC REGIONAL
TRAINING
CONFERENCE

Westin Kansas City
at Crown Center
November 7-9, 2013
\$145 single or double

Kansas City, Missouri

AFCC is an interdisciplinary and international association of professionals dedicated to improving the lives of children and families through the resolution of family conflict.

Register online at www.afccnet.org